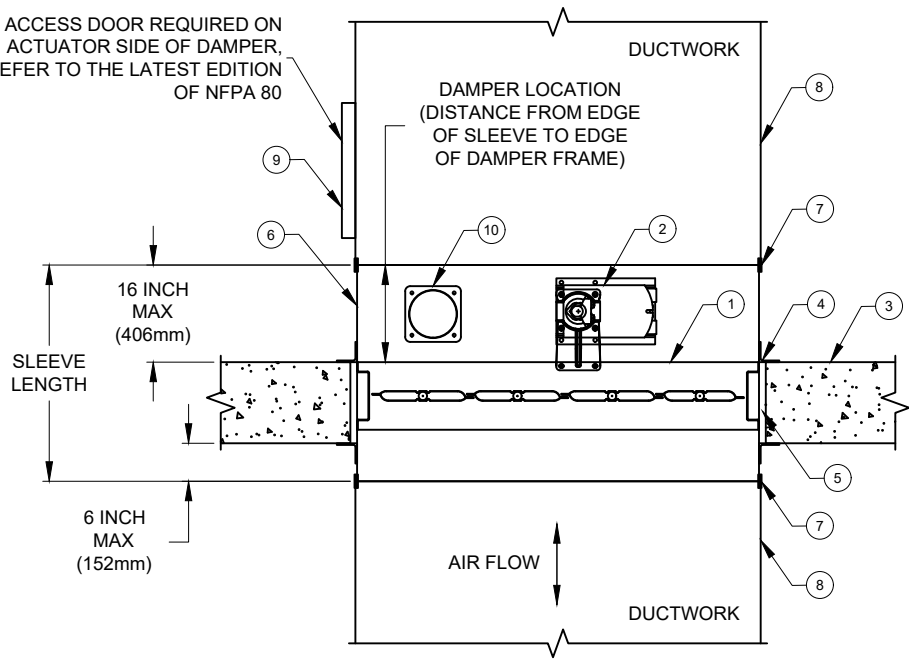


REVISION	SYM
MARKETING NOTE UPDATES (7) , COPYRIGHT NOTE	1

ACCESS DOOR REQUIRED ON ACTUATOR SIDE OF DAMPER, REFER TO THE LATEST EDITION OF NFPA 80




ITEM:

- 1. UL CLASSIFIED AS BOTH A FIRE DAMPER AND A LEAKAGE RATED SMOKE DAMPER
- 2. UL QUALIFIED DAMPER/ACTUATOR ASSEMBLY (ELECTRIC)
- 3. RATED BARRIER
- 4. RETAINING ANGLES
- 5. EXPANSION CLEARANCE
- 6. DAMPER SLEEVE
- 7. BREAKAWAY JOINT
- 8. STEEL DUCT
- 9. ACCESS DOOR
- 10. UL LISTED HEAT RESPONSIVE DEVICE (RRL, RRL/OCI, TOR)

NOTE:

- 1. DAMPERS SHALL BE CONSTRUCTED, TESTED, LABELED AND INSTALLED IN ACCORDANCE WITH UL555, UL555S, NFPA 80, NFPA 90A, NFPA 92, NFPA 101 AND NFPA 105.
- 2. DAMPER RATING SHALL MEET THE REQUIREMENTS OF INTERNATIONAL BUILDING CODE (IBC) AND COMPLY WITH LOCAL CODE REQUIREMENTS.
 - 2.1. DAMPERS SHALL BE RATED FOR VERTICAL OR HORIZONTAL MOUNTING AS REQUIRED AND SHOWN ON PROJECT PLANS.
- 3. DAMPER OPENING (EXPANSION GAPS) SHALL BE PER DAMPER MANUFACTURER'S UL APPROVED INSTALLATION INSTRUCTIONS.
 - 3.1. MAXIMUM DAMPER OPENING MAY NOT EXCEED THE DAMPER MANUFACTURER'S MAXIMUM UL LISTED SIZE.
- 4. SLEEVE GAUGE, TERMINATIONS AND RETAINING ANGLES SHALL BE AS REQUIRED AND COMPLY WITH UL AND SMACNA REQUIREMENTS.
- 5. HEAT RESPONSIVE DEVICE SHALL BE A SINGLE TEMPERATURE ELECTRIC HEAT SENSOR OR DUAL TEMPERATURE OVERRIDE SENSOR. CHECK PROJECT SPECIFIC REQUIREMENTS AND SPECIFICATIONS FOR TYPE AND TEMPERATURE RATINGS.
- 6. ACCESS DOORS SHALL BE PROVIDED FOR INSPECTION, TESTING AND MAINTENANCE TO COMPLY WITH NFPA 80.
- 7. BASIS OF DESIGN SHALL BE GREENHECK FSD-311 1-1/2 HOUR RATED STEEL AIRFOIL BLADE COMBINATION FIRE SMOKE DAMPER. (ALTERNATE MODELS: FSD-312 1-1/2 HOUR RATED; FSD-311M 1-1/2 HOUR RATED MODULATING; FSD-331 3 HOUR RATED)
- 8. FSD-311 MAY BE MOUNTED EITHER HORIZONTALLY OR VERTICALLY. BLADE AXIS MUST REMAIN HORIZONTAL.

Copyright © 2024 Greenheck Fan Corporation
Greenheck Fan Coporation reserves the right to make product changes without notice

PAINT	PART NO.	MAT'L	GAUGE	DESCRIPTION	
<div> GREENHECK</div> <div>TITLE</div> <div>FSD-311,IN FLOOR,INSTALL DETAIL</div>				DRAWN BY	ECO
				BERNETT	-----
				DATE	ENG. REF.
				05/23/2025	-----
				SUPERSEDES	-----
				SCALE	-----
				1/8	-----
				CAD DRAWING NO.	<div><div></div><div>100562627</div></div>